



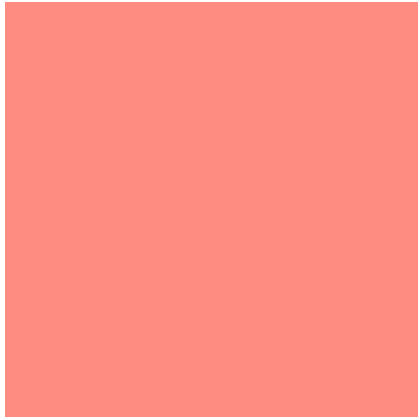
NEW ENGLAND
BOARD OF
HIGHER EDUCATION

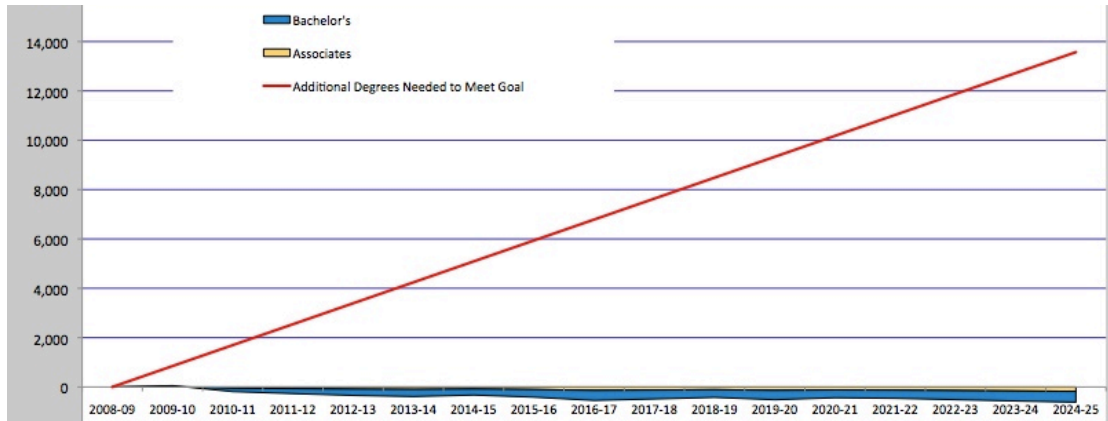


New England | 2025

College Completion & Productivity
State-Level Data Summary

Maine





Navigating through College Completion in Maine:

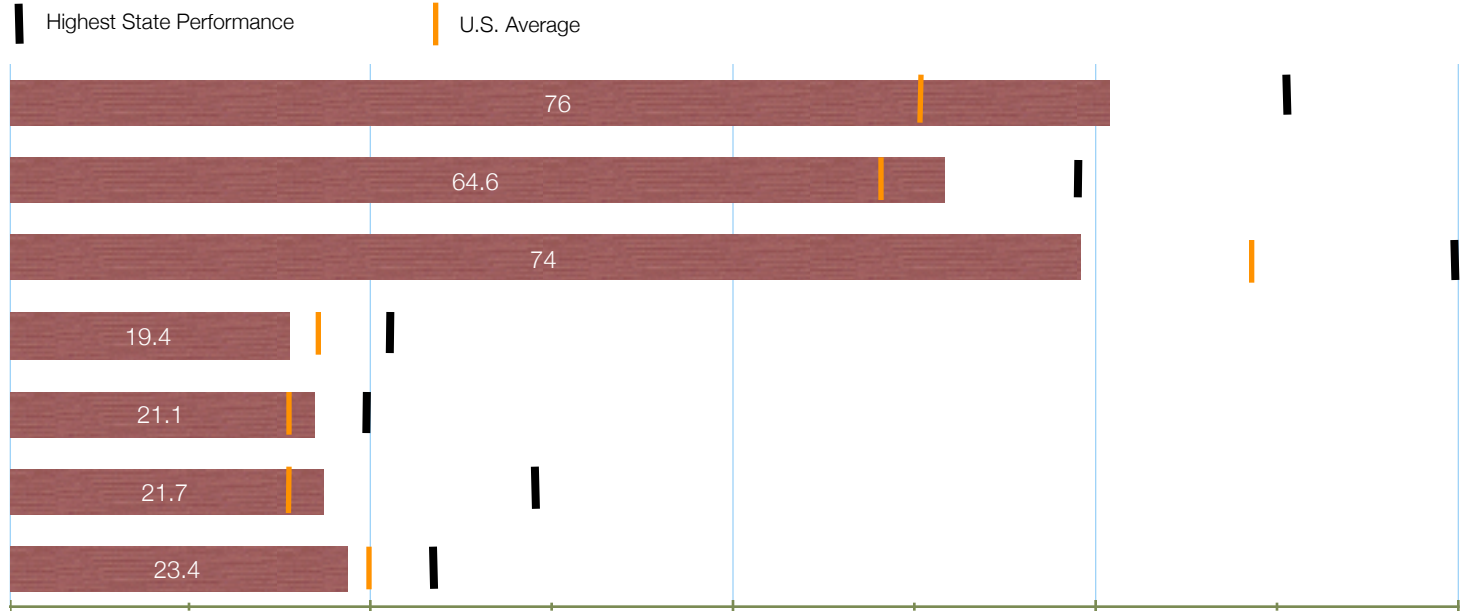
- Maine has one of the largest demands for workers with a high school diploma, but will fail to attract high paying jobs in growing sectors unless substantial investments are made in supporting human capital and higher education in the state by recasting its relationship with higher ed as a business partner to develop jobs.
- With average annual change carried out, the percentage of adults with college degrees will be **44.1%**.
- By 2018, **59% of all jobs** in the state will require postsecondary education and training beyond high school.
- Maine will create 196,000 job vacancies from growth and retirement, 115,000 of which will be for those with postsecondary credentials.

ESTIMATED ADDITIONAL DEGREES FROM TRADITIONAL-AGED STUDENTS	TOTAL ADDITIONAL DEGREES FROM ADULT LEARNERS	NUMBER OF ADDITIONAL DEGREES FROM ALL STUDENTS	PERCENTAGE FROM TRADITIONAL-AGED STUDENTS	PERCENT FROM ADULT LEARNERS
20,272	46,945	66,737	30%	70%

EDUCATION LEVEL COMPLETION FOR RESIDENTS AGED 25-64	CURRENT STATE LEVELS IN MAINE
Less than 9th grade	14,778
9th -12th grade; no diploma	97,954
HS graduate	250,930
Some college, no degree	157,193
Associate degree	74,513
Bachelor's degree	130,787
Graduate / professional degree	63,274
Total	729,429

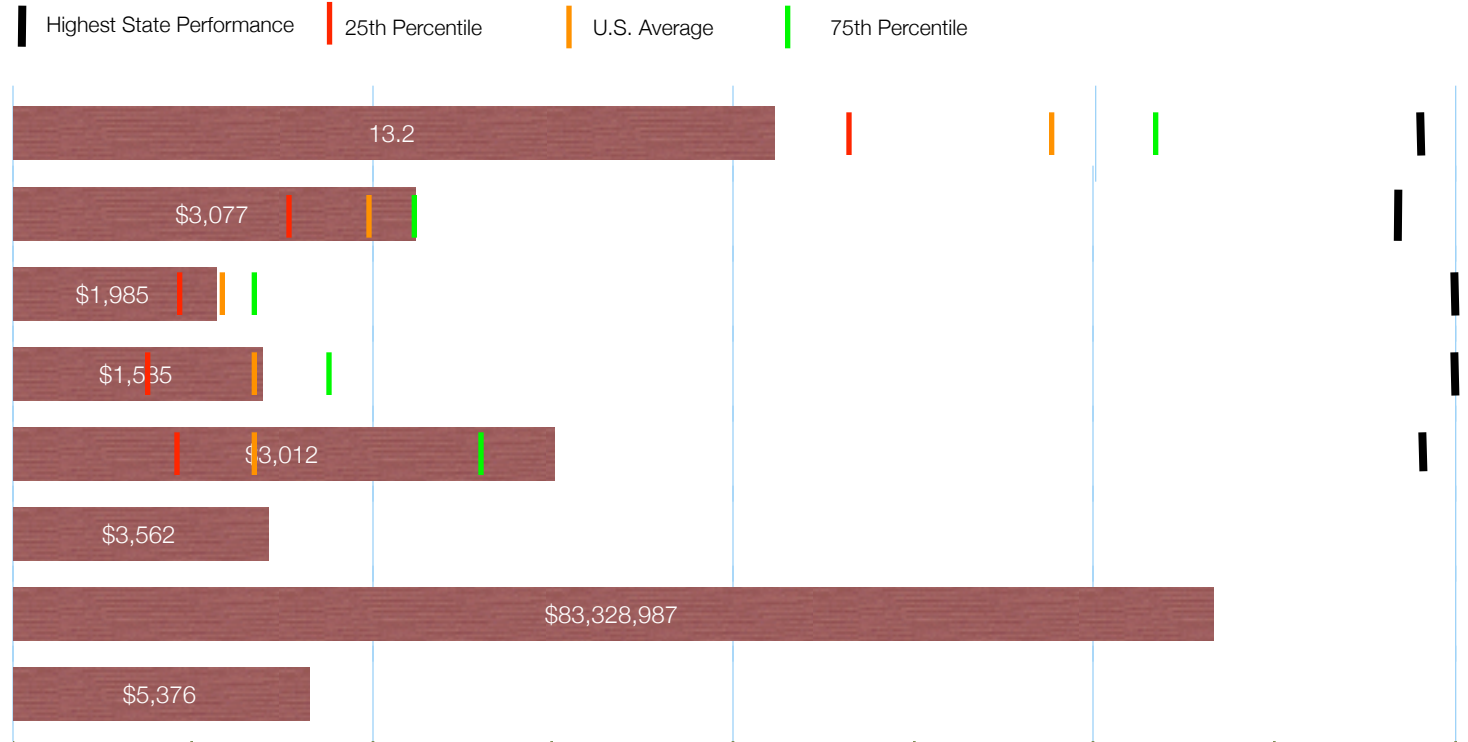
Relative Strengths and Weaknesses with Student Flow and Productivity

Student Flow Measures



PUBLIC TWO-YEAR

Reducing the Budget Gap



PUBLIC RESEARCH

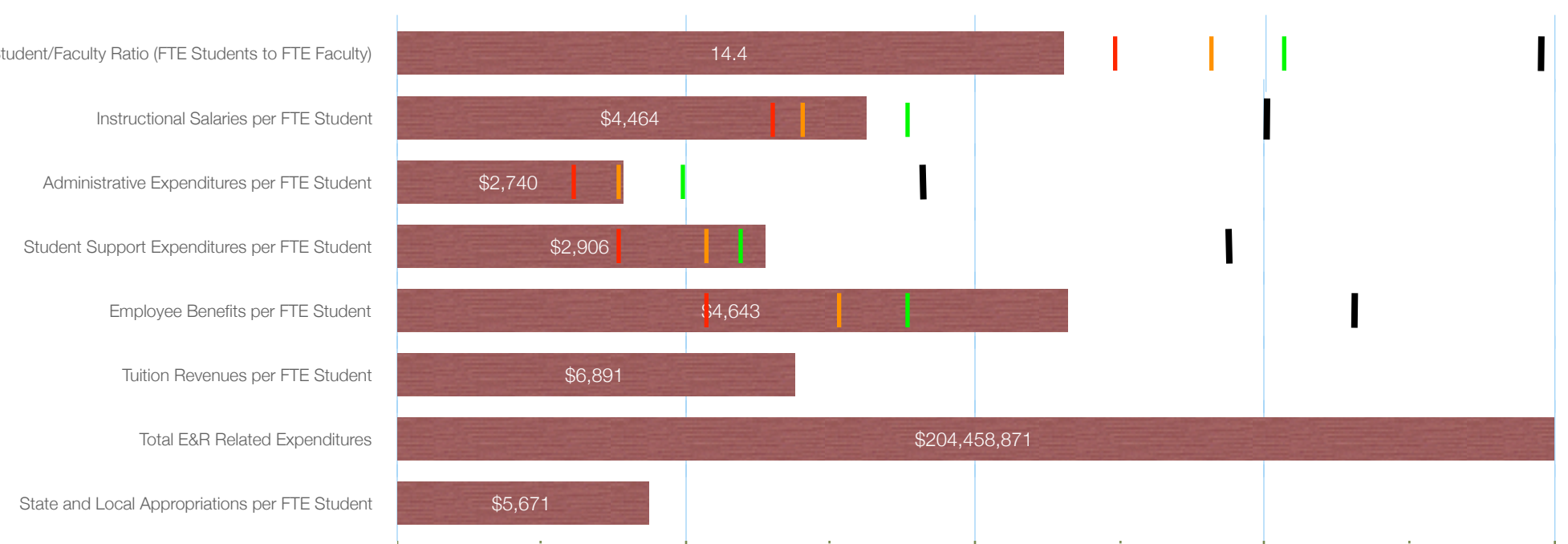
Highest State Performance
 25th Percentile
 U.S. Average
 75th Percentile

Reducing the Budget Gap



PUBLIC BACHELORS/MASTERS

Highest State Performance
 25th Percentile
 U.S. Average
 75th Percentile



NE | 2025

New England Board of Higher Education Policy and Research

Matthew Crellin, Director of Policy & Research

45 Temple Place
Boston, MA 02111

T 617-357-9620 x130

F 617-338-1577

<http://www.nebhe.org/policy-research/overview>

