

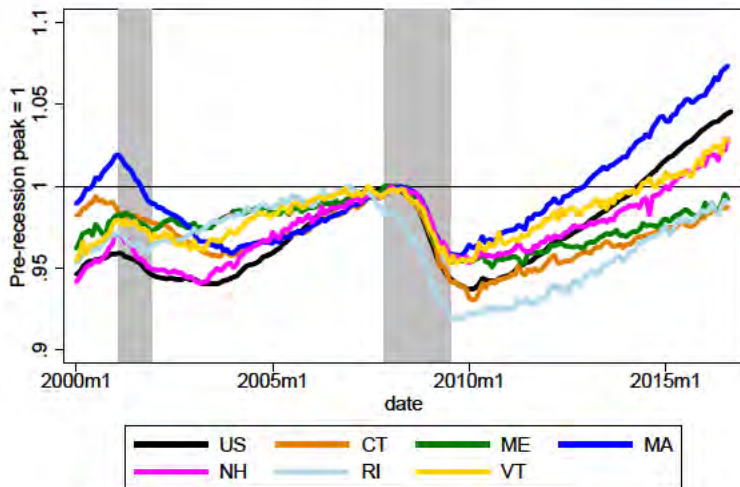
# Labor Market Trends in New England

Robert K. Triest  
Vice President and Economist  
Federal Reserve Bank of Boston  
*robert.triest@bos.frb.org*

New England Board of Higher Education  
Talent 4.0 Conference  
October 17, 2016

The views expressed in this presentation are those of the author and do not necessarily represent the views of the Federal Reserve Bank of Boston or the Federal Reserve System.

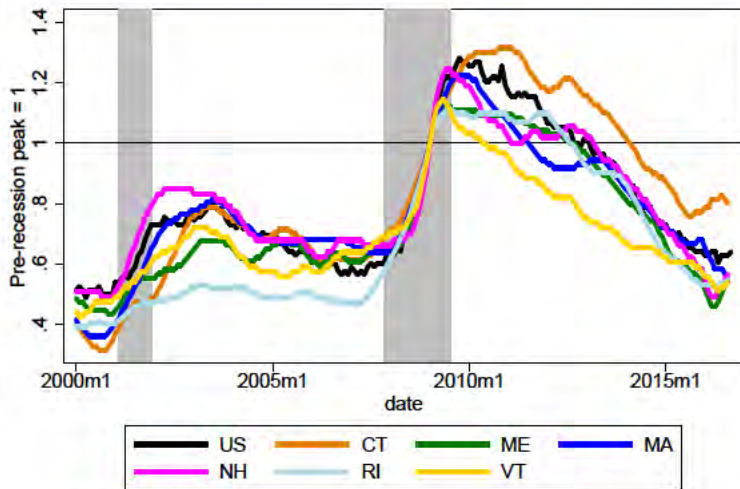
# Establishment employment growth



Seasonally adjusted

Source: Bureau of Labor Statistics Establishment Survey and Haver Analytics

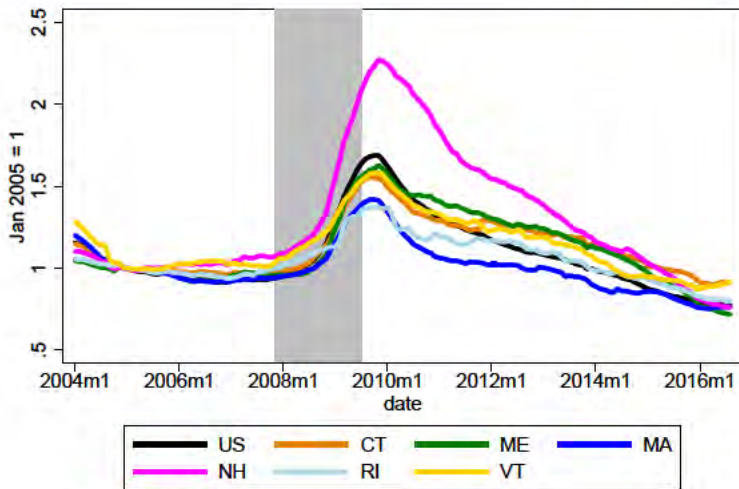
# Civilian unemployment rate (U-3)



Seasonally adjusted

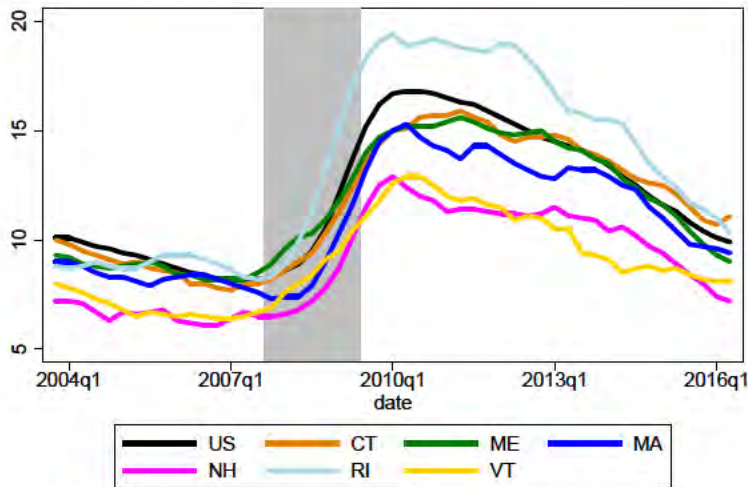
Source: Bureau of Labor Statistics Household Survey and Haver Analytics

# Initial claims for unemployment insurance benefits



12-month trailing moving average  
Source: U.S. Dept. of Labor and Haver Analytics

# U-6 labor underutilization rate

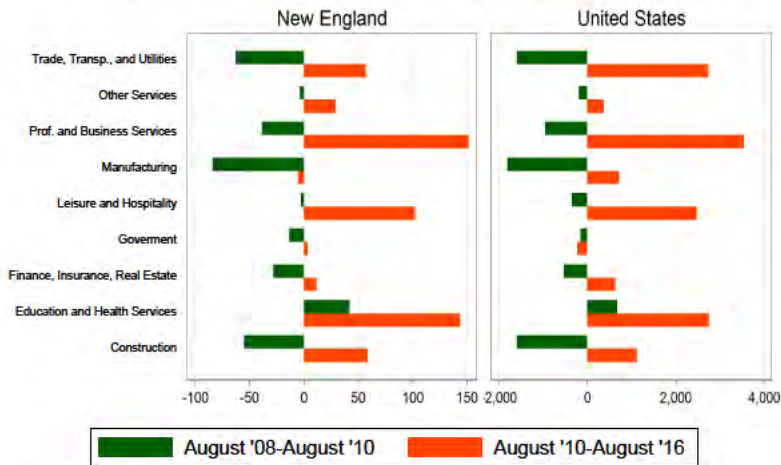


12-month moving average

Source: Bureau of Labor Statistics and Haver Analytics

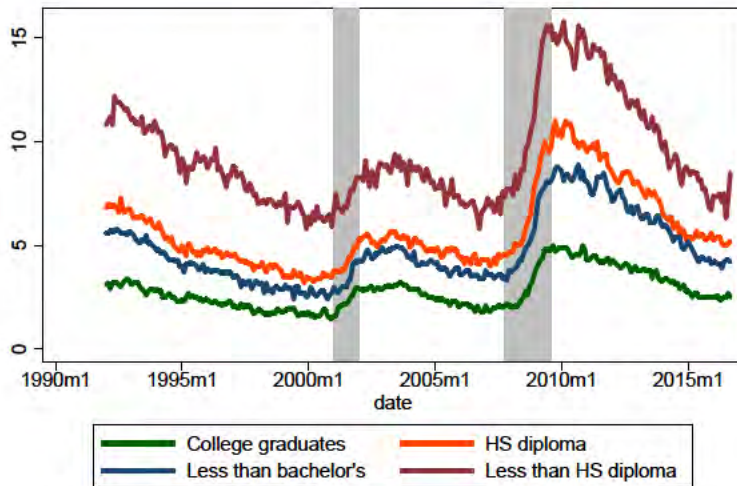
# New England and U.S. employment growth by supersector

## Industry employment growth, thousands of jobs



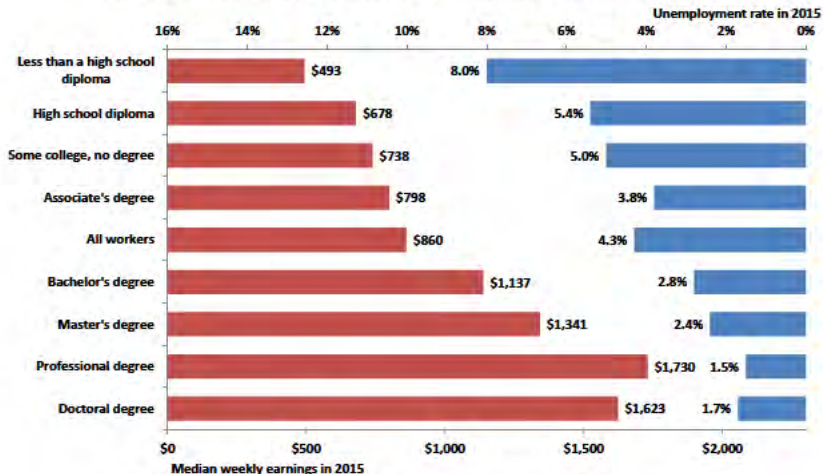
Source: Bureau of Labor Statistics Establishment Survey and Haver Analytics

# Unemployment by educational attainment



# Earnings and unemployment rates

Earnings and unemployment rates by educational attainment, 2015



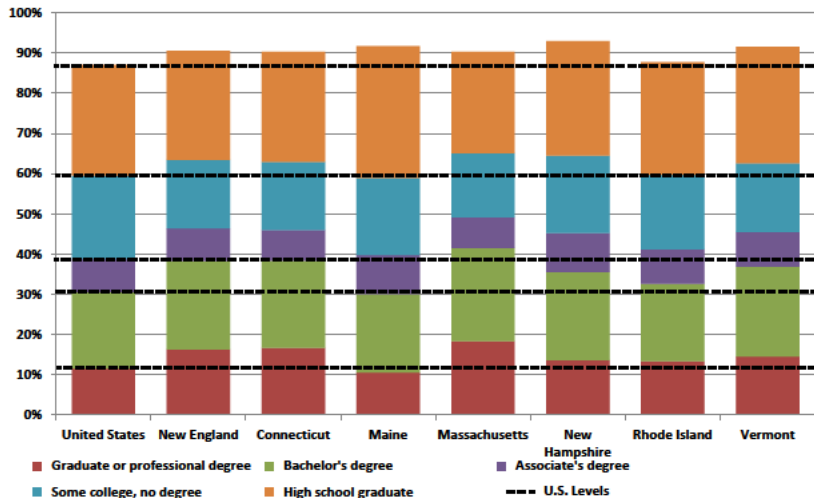
Note: Data are for persons age 25 and over. Earnings are for full-time wage and salary workers.

Source: U.S. Bureau of Labor Statistics, Current Population Survey, [http://www.bls.gov/emp/ep\\_table\\_001.htm](http://www.bls.gov/emp/ep_table_001.htm)



# Educational attainment in the U.S and New England

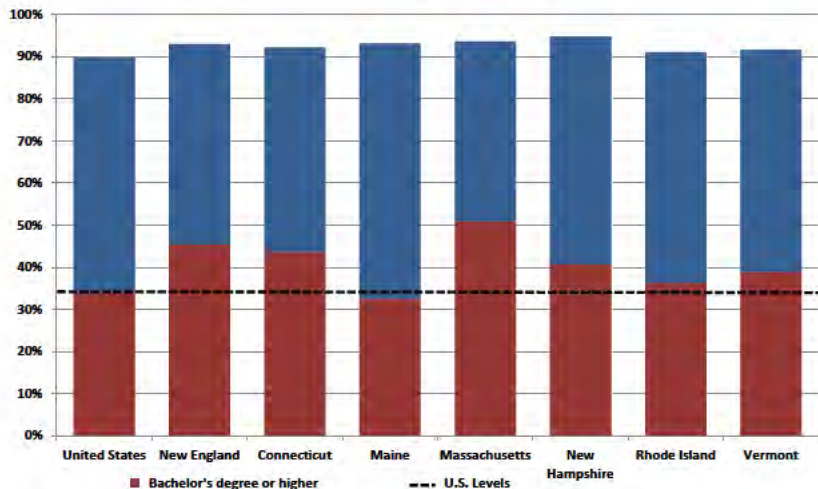
## Educational attainment for ages 25+



Source: U.S. Census Bureau, 2015 American Community Survey 1-Year Estimates  
Retrieved from <http://factfinder.census.gov/>

# Educational attainment of young adults

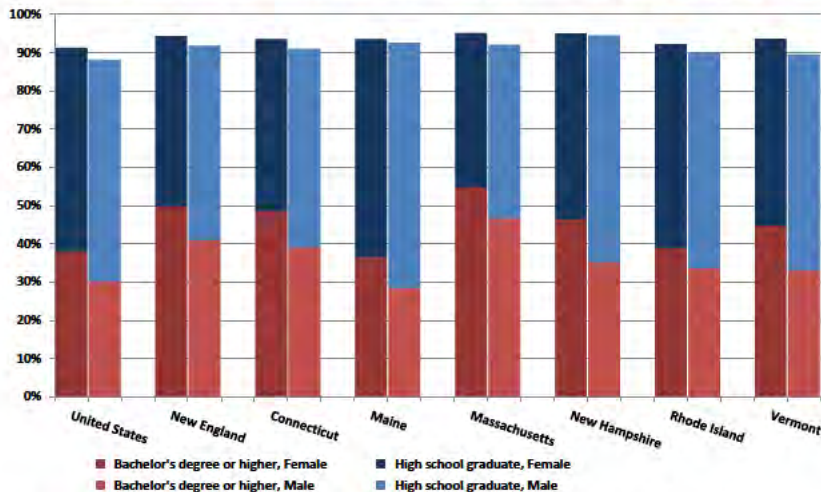
Educational attainment for ages 25-34



Source: U.S. Census Bureau, 2015 American Community Survey 1-Year Estimates  
Retrieved from <http://factfinder.census.gov/>

# Educational attainment by gender

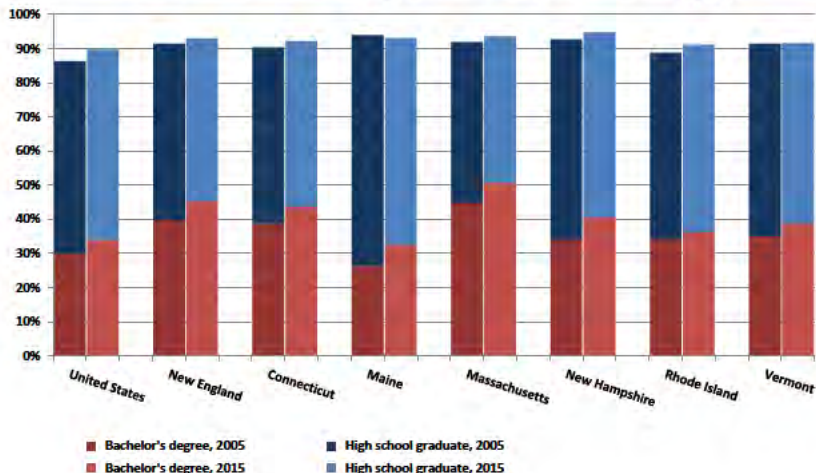
Educational attainment for females (left) and males (right) aged 25-34



Source: U.S. Census Bureau, 2015 American Community Survey 1-Year Estimates  
Retrieved from <http://factfinder.census.gov/>

# Educational attainment over the past decade

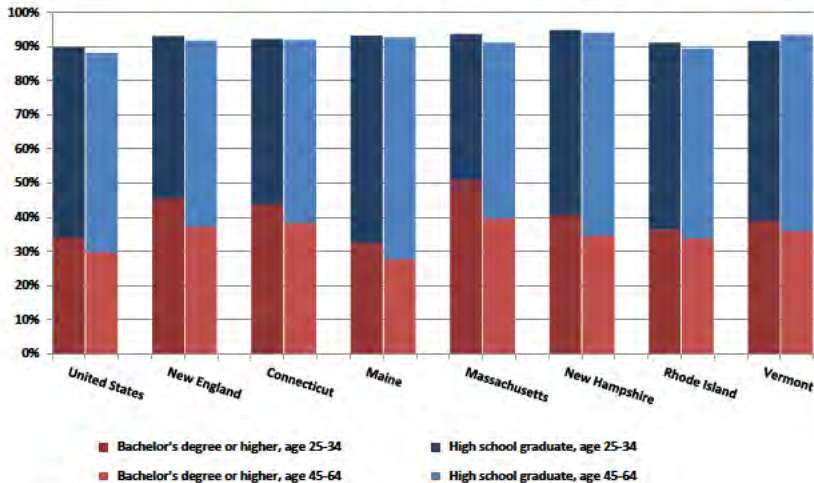
Educational Attainment for ages 25-34 in 2005 (left) and 2015 (right)



Source: U.S. Census Bureau, 2015 American Community Survey 1-Year Estimates, 2005 American Community Survey  
Retrieved from <http://factfinder.census.gov/>

# Educational attainment of young and mature adults

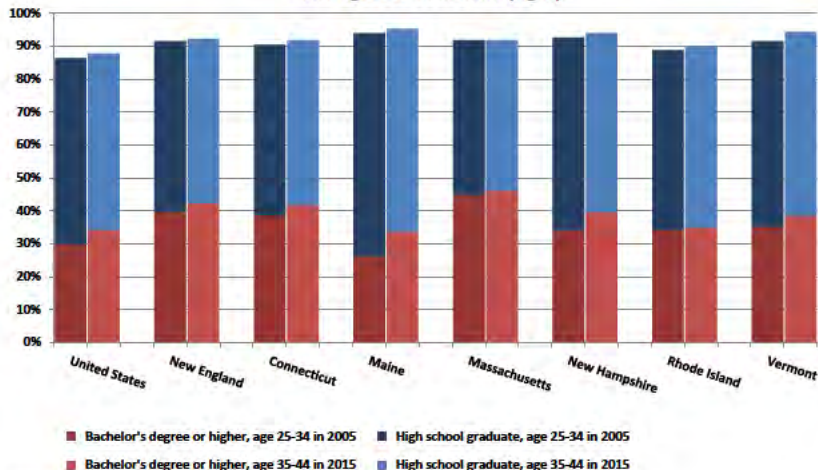
Educational Attainment for Ages 25-34 (left) and 45-64 (right)



Source: U.S. Census Bureau, 2015 American Community Survey 1-Year Estimates, 2005 American Community Survey  
Retrieved from <http://factfinder.census.gov/>

# Educational attainment of a cohort across time

Educational Attainment for Ages 25-34 in 2005 (left)  
and ages 35-44 in 2015 (right)



Source: U.S. Census Bureau, 2015 American Community Survey 1-Year Estimates, 2005 American Community Survey  
Retrieved from <http://factfinder.census.gov/>